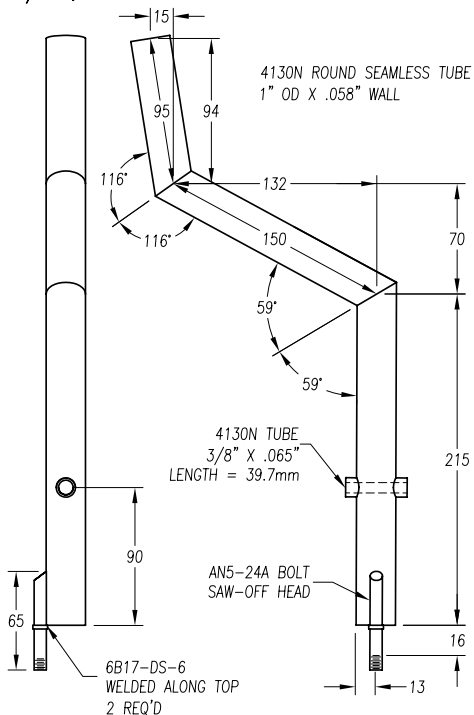
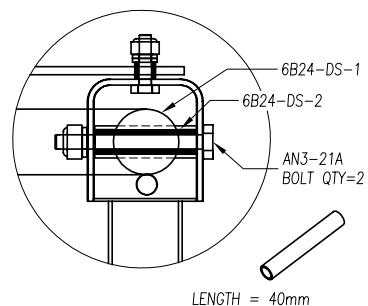


LEFT STICK
FRONT VIEW
O/B →

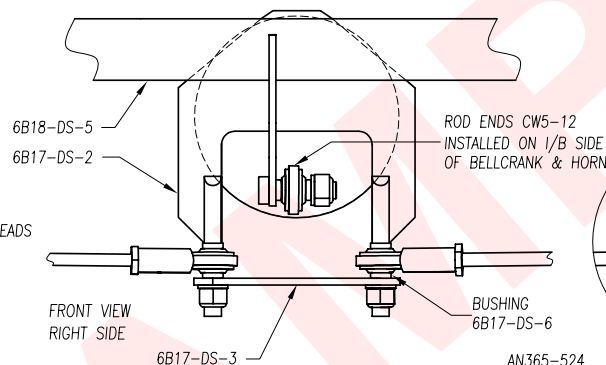
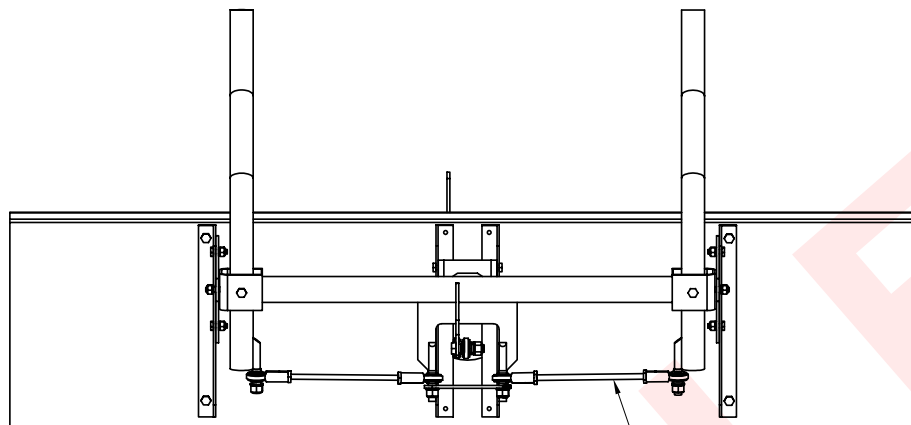
LEFT STICK
VIEW OF I/B SIDE



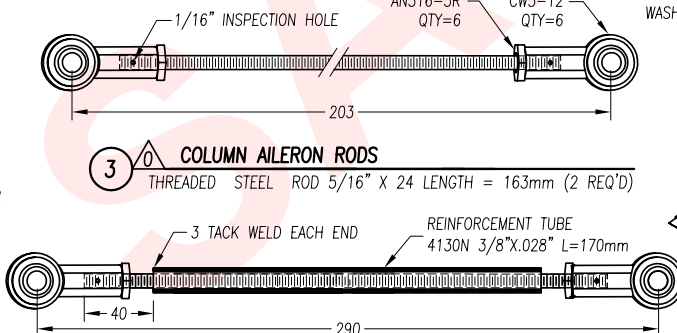
1 CONTROL COLUMN
WELDED ASSEMBLY (1L + 1R REQ'D)



2 COLUMN BUSHING
4130N 3/8"X.065" (2 REQ'D)



3 COLUMN AILERON RODS
THREADED STEEL ROD 5/16" X 24 LENGTH = 163mm (2 REQ'D)



4 H.T. ROD
THREADED STEEL ROD 5/16" X 24 LENGTH = 250mm (1 REQ'D)

AN5-11A
BOLTS, QTY=2
BUSHINGS 6B17-DS-6
ON I/B & O/B SIDE
OF ROD ENDS CW5-12

6B17-DS-1
BUSHING
6B17-DS-6

DUAL STICK CONFIGURATION
PAGE 3 OF 3
TURNBUCKLE BOLTS TO 6B17-DS-1

ZODIAC
CH 601 XL

DUAL STICK CONFIGURATION:
CONTROL COLUMN

6B24-DS

copyright© 2003 CHRIS HEINTZ zenithair.com

DATE: 06/03